



The Secretary of State
c/o The Planning Inspectorate
National Infrastructure Directorate
Temple Quay House
Temple Quay
Bristol
BS1 6PN

By e-mail only to: MeridianSolar@planninginspectorate.gov.uk

For the attention of Daniel Hurley, Case Officer, and Jennifer Savage, Case Manager

Thursday 8 May 2025

Your Reference: **EN010169**

Dear Daniel and Jennifer,

**Meridian Solar Farm – notification under Section 46 of the Planning Act 2008
Proposed Meridian Solar Farm Development Consent Order**

We write to provide the Secretary of State with notification for the purposes of section 46 of the Planning Act 2008 (the “Act”), that Meridian Solar Farm Limited (the “Applicant”) proposes to commence statutory consultation pursuant to section 42 of the Act in regard to its proposed application for a Development Consent Order (“DCO”) to authorise the proposed Meridian Solar Farm (the “Scheme”).

The consultation will commence on Thursday 24 April 2025 and run until 11:59pm on Sunday 8 June 2025. The consultation will be carried out pursuant to section 42, section 47 and section 48 of the Act, the Infrastructure Planning (Applications: Prescribed Forms and Procedures) Regulations 2009 (the “APFP Regulations”) and the Infrastructure Planning (Environmental Impact Assessment) Regulations 2017 (the “EIA Regulations”). The DCO application will contain full details of Meridian Solar Farm and will be accompanied by an Environmental Statement in accordance with the Act and the EIA Regulations.

Summary of the Scheme

The Scheme is being promoted by Meridian Solar Farm Limited, a subsidiary of Downing Renewable Developments. The Scheme is proposed to be located on land to the north of Crowland and east of Spalding, and is located within the administrative boundaries of Lincolnshire County Council and South Holland District Council.

The Scheme would comprise the construction, operation (including maintenance) and decommissioning of photovoltaic (PV) solar panels and an approximately 12 to 13 km overhead line connection into National Grid’s planned Weston Marsh substation (which is due to be located east of Spalding, with the exact location to be confirmed by National Grid). The Scheme also includes associated infrastructure,

including co-located battery energy storage systems (BESS) and inter-array connections to link together the land parcels where the solar panels will be located. The BESS is associated development to ensure that energy can be stored when it is generated and not demanded. The BESS will have a direct relationship with the solar PV panels and it will support the operation of this by storing electricity produced during times of peak capacity until it is needed.

The Scheme comprises a generating station of approximately 750 megawatts and the installation of an above ground electric line greater than two kilometres in length. The Scheme therefore qualifies as a Nationally Significant Infrastructure Project (NSIP) under sections 14(1)(a), 14(1)(b), 15(2) and 16 of the Act. A DCO application for the Scheme (the “Application”) will be made by the Applicant to the Secretary of State for Energy Security and Net Zero (the “Secretary of State”) via the Planning Inspectorate, who will appoint an Examining Authority to examine the application on behalf of the Secretary of State. After examination, the Examining Authority will make its recommendation on the Application to the Secretary of State, who will make the final decision on whether or not to grant the DCO. The Applicant intends to submit the Application towards the end of 2025.

Consultation materials

In accordance with section 46 of the Act, the Applicant hereby supplies the Secretary of State with the same information that is being supplied to all relevant consultees identified in accordance with section 42 of the Act. The consultation materials will be found on the ‘Documents’ page on our dedicated Project website during the consultation period: www.meridiansolarfarm.co.uk. They are all available for the Planning Inspectorate to view and download via this WeTransfer link: <https://we.tl/t-3nPanYVZHv>.

- Consultation Newsletter, which is being posted to all addresses within a defined Primary Consultation Zone (as described in the Statement of Community Consultation). This document provides introductory information about the Scheme, the consultation and where more detailed information can be found.
- Consultation Information Booklet, which provides a more detailed overview of the Scheme, including a summary of some of the potential environmental effects, as detailed in the Preliminary Environmental Information Report (“PEIR”).
- Consultation Feedback Form, which may be used to provide a response to our consultation on the Scheme.
- Interactive Scheme map, which is a digital map hosted on the website for users to engage with elements of the Scheme by zooming, dragging and clicking to reveal more information.
- PEIR and Non-Technical Summary (“NTS”)
- Statement of Community Consultation (“SoCC”), which has been publicised in accordance with Section 47 of the Act to explain how we will consult on our proposals.

The Applicant has included as enclosures with this letter a template of the letters being sent to statutory consultees under sections 42 and 44 of the Act, the Scheme Development Area Boundary Plan, and a copy of the Applicant’s statutory notice prepared in accordance with section 48 of the Act and Regulation 4 of the APFP Regulations. Letters will be issued to statutory consultees under sections 42 and 44 of the Act by first class post.

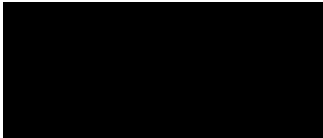
All of the consultation documents will be available via the Applicant's project website at www.meridiansolarfarm.co.uk from **Thursday 24 April 2025**. We will also be holding a series of in person consultation events, as well as uploading two information presentations to the Scheme website during the consultation period. Further details of the consultation events can be found in the section 48 notice enclosed.

Following the receipt and consideration of responses to this statutory consultation, the Applicant anticipates submitting this DCO application to the Secretary of State later in 2025. An Environmental Statement will be submitted with the DCO application.

If you have any queries or require any additional information, please do not hesitate to contact me on enquiries@meridiansolar.co.uk or 0800 652 6120.

We would appreciate if you could confirm receipt of this letter as soon as possible.

Yours sincerely,




Head of NSIP Projects
Downing Renewable Developments

Enclosed:

- Copy of section 42 consultation letter
- Copy of section 44 consultation letter
- Copy of Scheme Development Area Boundary Plan
- Copy of section 48 notice.



Thursday 24 April 2025

Dear Consultee,

Meridian Solar Farm Development Consent Order

Statutory Consultation: Thursday 24 April to Sunday 8 June 2025

Section 42 of the Planning Act 2008 (as amended) ("the Act")

The Infrastructure Planning (Applications: Prescribed Forms and Procedure) Regulations 2009 (as amended) ("APFP Regulations")

The Infrastructure Planning (Environmental Impact Assessment) Regulations 2017 (the "EIA Regulations")

Planning Inspectorate reference: EN010169

We are writing to you regarding the proposed Meridian Solar Farm (the "Scheme"), which is a proposed solar farm and overhead line connection to the national grid, that will generate around 750 MW of electricity and connect to the National Electricity Transmission System (NETS). This letter is being sent to you as part of a statutory consultation exercise carried out pursuant to Section 42 the Act. Meridian Solar Farm Limited (the "Applicant") is consulting you in your capacity as a prescribed consultee under Section 42(1) of the Act and Schedule 1 to the APFP Regulations.

The Scheme

The Scheme is being promoted by Meridian Solar Farm Limited, a subsidiary of Downing Renewable Developments. The Scheme is proposed to be located on land to the north of Crowland and east of Spalding, and is located within the administrative boundaries of Lincolnshire County Council and South Holland District Council.

The Scheme would comprise the construction, operation (including maintenance) and decommissioning of photovoltaic (PV) solar panels and an approximate 12 to 13 km of overhead line connection into National Grid's planned Weston Marsh substation (due to be located east of Spalding, with the exact location to be confirmed by National Grid). The Scheme will also include associated infrastructure, including co-located battery energy storage systems (BESS) and inter-array connections to link together the land parcels where the solar panels are located. The BESS is associated development to ensure that energy can be stored when it is generated and not demanded. The BESS will have a direct relationship with the solar PV panels and it will support the operation of this by storing electricity produced during times of peak capacity until it is needed.

The Scheme comprises a generating station of approximately 750 megawatts and the installation of an above ground electric line greater than two kilometres in length. The Scheme therefore qualifies as a Nationally Significant Infrastructure Project (NSIP) under sections 14(1)(a), 14(1)(b), 15(2) and 16 of the Act. A Development Consent Order ("DCO") application for the Scheme (the "Application") will be made by the Applicant to the Secretary of State for Energy Security and Net Zero (the "Secretary of State") via the Planning Inspectorate, who will appoint an Examining Authority to examine the application on behalf of the Secretary of State. After examination, the Examining Authority will make its recommendation on the Application to the Secretary of State, who will make the final decision on whether or not to grant the DCO. The Applicant intends to submit the Application towards the end of 2025.

Why we are writing to you

The Act and the APFP Regulations set out specific requirements with respect to a duty to consult on applications for DCOs before an application is made. You have been identified as a prescribed consultee under Section 42(1) of the Act and Regulation 3 of the APFP Regulations, or you are a consultee identified under Regulation 11 of the EIA Regulations or a person where it has been decided it would be appropriate to consult in any event.

This letter is to give you notice of stage two of the Applicant's consultation on the Scheme, that is statutory consultation, which is running from **Thursday 24 April 2025 until 11:59pm on Sunday 8 June 2025** (hereafter referred to as "the consultation period") and we invite responses on or before the closing date. Details of how this consultation is being carried out can be found in the Statement of Community Consultation (the "SoCC"), which will be available during the consultation period at www.meridiansolarfarm.co.uk/documents and in hard copy (for reference only) at the in person consultation events and local information point listed below.

This statutory consultation is an opportunity for you to share your views on our proposals for the Scheme as a whole. By responding you will enable us to have regard to your views as we develop and refine our proposals before submitting the DCO Application to the Planning Inspectorate.

We have prepared a Preliminary Environmental Information Report ("PEIR") and a PEIR Non-Technical Summary ("NTS") as the Scheme is an Environmental Impact Assessment ("EIA") development as defined by the EIA Regulations. These documents will help you to understand the likely significant environmental effects of the Scheme. An Environmental Statement will be submitted with the Application.

Consultation materials

We have produced several materials that will provide further details of the consultation and our proposals:

- Consultation Newsletter, which is being posted to all addresses within a defined Primary Consultation Zone (as described in the SoCC). This document provides introductory information about the Scheme, the consultation, and where more detailed information can be found.
- Consultation Information Booklet, which provides a more detailed overview of the Scheme, including a summary of some of the potential effects, as explained in the PEIR.
- Consultation Feedback Form, which may be used to provide a response to the consultation.
- Interactive Scheme map, which is a digital map hosted on the website for users to engage with elements of the Scheme by zooming, dragging and clicking to reveal more information.
- Copy of the newspaper notice (also enclosed with this letter) published under section 48 of the Act and the requirements set out in Regulation 4 of the APFP Regulations.
- PEIR and NTS.
- SoCC, which has been publicised in accordance with Section 47 of the Act.

These materials can be accessed during the consultation period via our website:

www.meridiansolarfarm.co.uk.

The consultation materials are available in hard copy at no extra charge (except the PEIR and NTS, hard copies of which can be requested for a charge of £0.35 per page to cover printing and posting costs). If you require this information in an alternative format, such as Braille, large print or alternative languages, please contact us using the details in this letter.

At the start of the consultation period, copies of consultation information booklets, feedback forms and newsletters will be deposited in local information points located in the vicinity of the Scheme. Our SoCC,

NTS and full PEIR will be available in printed format for inspection at the information point: Crowland Library. All of the locations and opening times are as follows:

Venue	Opening hours	Materials available
Crowland Library , Hall Street, Crowland PE6 OEW	Tuesday and Thursday: 9.30am to 12.30pm and 2pm to 5pm Saturday: 10am to 1pm	To takeaway Consultation Information Booklet Consultation Feedback Form Consultation Newsletter For reference only PEIR NTS SoCC
Spalding Library , Victoria Street, Spalding PE11 1EA	Monday, Tuesday, Wednesday and Friday: 9am to 5pm Thursday: 9am to 6pm Saturday: 9am to 1pm	To takeaway Consultation Information Booklet Consultation Feedback Form Consultation Newsletter
Holbeach Library , Co-Op Store, 5 Fleet Street, Holbeach, Spalding PE12 7AX	Monday to Friday: 9am to 5pm Saturday: 9am to 12 noon	To takeaway Consultation Information Booklet Consultation Feedback Form Consultation Newsletter
Tonic Health Centre Spalding , 6 Broadgate House, Westlode Street, Spalding PE11 2AF	Monday and Thursday: 10am to 7pm Tuesday, Wednesday and Friday: 10am to 3pm	To takeaway Consultation Information Booklet Consultation Feedback Form Consultation Newsletter
Tonic Health Centre Holbeach , Holbeach Hub, Boston Road South, Holbeach PE12 7LR	Monday and Thursday: 10am to 7pm Tuesday, Wednesday and Friday: 10am to 3pm	To takeaway Consultation Information Booklet Consultation Feedback Form Consultation Newsletter

Venue opening times are correct at the time of publication. We recommend contacting the venue to check the opening times before visiting, especially over bank holidays.

Consultation events and online presentations

During the consultation period, a series of in person consultation events will be held where you can speak with members of the project team. Printed copies of the consultation materials will be made available at consultation events for attendees to view. Attendees will also be able to take away copies of the consultation information booklet, feedback form and newsletter.

Venue	Date	Time
Sutton St Edmund Village Hall , 273 Broadgate, Spalding PE12 0LR	Saturday 10 May 2025	10:30 – 16:30
Crowland Snowden Pavilion , Thorney Road, Peterborough PE8 9QR	Wednesday 21 May 2025	14:00 – 20:00
Weston Village Hall , Small Drove, Spalding PE12 6HU	Thursday 22 May 2025	14:00 – 20:00

Details are correct at the time of publication and are unlikely to change. Any updates will be reflected on the Scheme website, which we recommend to check for the most current details before attending.

We will also upload two online information presentations to the Scheme website during the consultation period. The first presentation will provide an overview of our proposals and where to find out more

information. The second presentation will be uploaded after the in person events and will provide a summary of the main questions we were asked and responses to them.

Responding to the consultation

Responses to the consultation must be (i) received by **11:59pm on Sunday 8 June 2025**, (ii) be made in writing, (iii) state the grounds of the response or representation, (iv) indicate who is making the response or representation, and (v) give an address to which correspondence relating to the response or representation may be sent. Should you wish your comments to remain anonymous, please provide your postcode only.

You can provide your response to the consultation by completing our feedback form online at www.meridiansolarfarm.co.uk or completing a paper copy/writing your own form of a response and sending it via email (enquiries@meridiansolar.co.uk) or by post (by writing: FREEPOST DOWNING MERIDIAN – no stamp needed). If you require materials in an alternative format (e.g. large print or braille) please get in touch using the details above.

The Applicant will have regard to any comments received as part of the consultation and any of its appointed agents with respect to the further development of the Scheme and Application. Responses will form the basis of a consultation report that will be one of the factors taken into consideration by the Secretary of State when deciding whether the Application can be accepted for Examination. Therefore, in providing any comment, it should be borne in mind that the substance of your comment may be communicated to others as part of that consultation report.

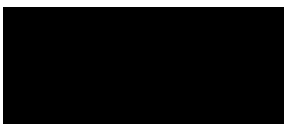
However, we will request that personal details are not placed on the public record. Personal details will be held securely in accordance with the relevant data protection legislation and will be used solely in connection with the consultation process and the development of the Scheme and, except as noted above, will not be disclosed to any third parties.

The Development Consent Order process

Information about the Act and DCOs can be found on the Planning Inspectorate's National Infrastructure Planning website: <https://infrastructure.planninginspectorate.gov.uk/>

If you have any questions about this letter, the Scheme or consultation, please do not hesitate to contact enquiries@meridiansolar.co.uk or 0800 652 6120.

Yours faithfully,



Head of NSIP Projects
Downing Renewable Developments

Enc. Copy of section 48 notice
Enc. Scheme Development Area Boundary Plan



Thursday 24 April 2025

Dear Consultee,

**Ref: Land shown on enclosed plan
Meridian Solar Farm Development Consent Order**

Statutory Consultation: Thursday 24 April to Sunday 8 June 2025

Sections 42 (Duty to consult on a proposed location) and 44 (Categories for purposes of section 42(1)(d) of the Planning Act 2008 (the "Act"))

The Infrastructure Planning (Applications: Prescribed Forms and Procedure) Regulations 2009 (as amended) (the "APFP Regulations")

The Infrastructure Planning (Environmental Impact Assessment) Regulations 2017 (the "EIA Regulations")

Planning Inspectorate reference: EN010169

We are writing to you regarding the proposed Meridian Solar Farm (the "Scheme"), which is a proposed solar farm and overhead line connection to the national grid, that will generate around 750 MW of electricity and connect to the National Electricity Transmission System (NETS).

The Scheme

The Scheme is being promoted by Meridian Solar Farm Limited, a subsidiary of Downing Renewable Developments. The Scheme is proposed to be located on land to the north of Crowland and east of Spalding, and is located within the administrative boundaries of Lincolnshire County Council and South Holland District Council.

The Scheme would comprise the construction, operation (including maintenance) and decommissioning of photovoltaic (PV) solar panels and an approximately 12 to 13 km of overhead line connection into National Grid's planned Weston Marsh substation (due to be located east of Spalding, with the exact location to be confirmed by National Grid). The Scheme will also include associated infrastructure, including co-located battery energy storage systems (BESS) and inter-array connections to link together the land parcels where the solar panels are located. The BESS is associated development to ensure that energy can be stored when it is generated and not demanded. The BESS will have a direct relationship with the solar PV panels and it will support the operation of this by storing electricity produced during times of peak capacity until it is needed.

The Scheme comprises a generating station of approximately 750 megawatts and the installation of an above ground electric line greater than two kilometres in length. The Scheme therefore qualifies as a Nationally Significant Infrastructure Project (NSIP) under sections 14(1)(a), 14(1)(b), 15(2) and 16 of the Act. A Development Consent Order ("DCO") application for the Scheme (the "Application") will be made by the Applicant to the Secretary of State for Energy Security and Net Zero (the "Secretary of State") via the Planning Inspectorate, who will appoint an Examining Authority to examine the application on behalf of the Secretary of State. After examination, the Examining Authority will make its recommendation on the Application to the Secretary of State, who will make the final decision on whether or not to grant the DCO. The Applicant intends to submit the Application towards the end of 2025.

Your interest in land

Prior to making the Application, we are required to consult with a variety of people and organisations about the proposal for the Application in accordance with Section 42(1)(d) of the Act. As set out in section 44 of the Act, we are required to consult with three categories of person under section 42(1)(d): (1) landowners, lessees, tenants, occupiers; (2) those with other interests in the land or have a power to sell and convey the land or release the land; and (3) those who may be entitled to make a claim for compensation as a result of the Scheme.

Further to a review of title and information received from landowners, we have identified that you may have an interest in land which falls within our current proposed development area.

Please refer to the Scheme Development Area Boundary Plan enclosed with this letter showing all land within the development area boundary, which we believe includes your interest in land.

Whilst this information is considered up to date at the time the consultation will take place, this is an ongoing process. The identification of all land interests to which the Scheme relates will be updated and refined following our stage two consultation (more details below), prior to submission of the Application.

Consultation on the Scheme

This letter is to give you notice of stage two of the Applicant's consultation on the Scheme, that is statutory consultation, which is running from **Thursday 24 April 2025 until 11:59pm on Sunday 8 June 2025** (hereafter referred to as "the consultation period") and we invite responses on or before the closing date. Details of how this consultation is being carried out can be found in the Statement of Community Consultation (the "SoCC"), which will be available during the consultation period at www.meridiansolarfarm.co.uk/documents and in hard copy (for reference only) at the in person consultation events and local information point listed below.

This statutory consultation is an opportunity for you to share your views on our proposals for the Scheme as a whole. By responding you will enable us to have regard to your views as we develop and refine our proposals before submitting the DCO Application to the Planning Inspectorate.

We have prepared a Preliminary Environmental Information Report ("PEIR") and a PEIR Non-Technical Summary ("NTS") as the Scheme is an Environmental Impact Assessment ("EIA") development as defined by the EIA Regulations. These documents will help you to understand the likely significant environmental effects of the Scheme. An Environmental Statement will be submitted with the Application.

Consultation materials

We have produced several materials that will provide further details of the consultation and our proposals:

- Consultation Newsletter, which is being posted to all addresses within a defined Primary Consultation Zone (as described in the SoCC). This document provides introductory information about the Scheme, the consultation, and where more detailed information can be found.
- Consultation Information Booklet, which provides a more detailed overview of the Scheme, including a summary of some of the potential effects, as explained in the PEIR.
- Consultation Feedback Form, which may be used to provide a response to the consultation.
- Interactive Scheme map, which is a digital map hosted on the website for users to engage with elements of the Scheme by zooming, dragging and clicking to reveal more information.
- Copy of the newspaper notice (also enclosed with this letter) published under section 48 of the Act and the requirements set out in Regulation 4 of the APFP Regulations.
- PEIR and NTS.
- SoCC, which has been publicised in accordance with Section 47 of the Act.

These materials can be accessed during the consultation period via our website:

www.meridiansolarfarm.co.uk.

The consultation materials are available in hard copy at no extra charge (except the PEIR and NTS, hard copies of which can be requested for a charge of £0.35 per page to cover printing and posting costs). If you require this information in an alternative format, such as Braille, large print or alternative languages, please contact us using the details in this letter.

At the start of the consultation period, copies of consultation information booklets, feedback forms and newsletters will be deposited in local information points located in the vicinity of the Scheme. Our SoCC, NTS and full PEIR will be available in printed format for inspection at the information point: Crowland Library. All of the locations and opening times are as follows:

Venue	Opening hours	Materials available
Crowland Library , Hall Street, Crowland PE6 0EW	Tuesday and Thursday: 9.30am to 12.30pm and 2pm to 5pm Saturday: 10am to 1pm	To takeaway Consultation Information Booklet Consultation Feedback Form Consultation Newsletter For reference only PEIR NTS SoCC
Spalding Library , Victoria Street, Spalding PE11 1EA	Monday, Tuesday, Wednesday and Friday: 9am to 5pm Thursday: 9am to 6pm Saturday: 9am to 1pm	To takeaway Consultation Information Booklet Consultation Feedback Form Consultation Newsletter
Holbeach Library , Co-Op Store, 5 Fleet Street, Holbeach, Spalding PE12 7AX	Monday to Friday: 9am to 5pm Saturday: 9am to 12 noon	To takeaway Consultation Information Booklet Consultation Feedback Form Consultation Newsletter
Tonic Health Centre Spalding , 6 Broadgate House, Westlode Street, Spalding PE11 2AF	Monday and Thursday: 10am to 7pm Tuesday, Wednesday and Friday: 10am to 3pm	To takeaway Consultation Information Booklet Consultation Feedback Form Consultation Newsletter
Tonic Health Centre Holbeach , Holbeach Hub, Boston Road South, Holbeach PE12 7LR	Monday and Thursday: 10am to 7pm Tuesday, Wednesday and Friday: 10am to 3pm	To takeaway Consultation Information Booklet Consultation Feedback Form Consultation Newsletter

Venue opening times are correct at the time of publication. We recommend contacting the venue to check the opening times before visiting, especially over bank holidays.

Consultation events and online presentations

During the consultation period, a series of in person consultation events will be held where you can speak with members of the project team. Printed copies of the consultation materials will be made available at consultation events for attendees to view. Attendees will also be able to take away copies of the consultation information booklet, feedback form and newsletter.

Venue	Date	Time
Sutton St Edmund Village Hall , 273 Broadgate, Spalding PE12 0LR	Saturday 10 May 2025	10:30 – 16:30
Crowland Snowden Pavilion , Thorney Road, Peterborough PE8 9QR	Wednesday 21 May 2025	14:00 – 20:00
Weston Village Hall , Small Drove, Spalding PE12 6HU	Thursday 22 May 2025	14:00 – 20:00

Details are correct at the time of publication and are unlikely to change. Any updates will be reflected on the Scheme website, which we recommend to check for the most current details before attending.

We will also upload two online information presentations to the Scheme website during the consultation period. The first presentation will provide an overview of our proposals and where to find out more information. The second presentation will be uploaded after the in person events and will provide a summary of the main questions we were asked and a response to them.

Responding to the consultation

Responses to the consultation must be (i) received by **11:59pm on Sunday 8 June 2025**, (ii) be made in writing, (iii) state the grounds of the response or representation, (iv) indicate who is making the response or representation, and (v) give an address to which correspondence relating to the response or representation may be sent. Should you wish your comments to remain anonymous, please provide your postcode only.

You can provide your response to the consultation by completing our feedback form online at www.meridiansolarfarm.co.uk or completing a paper copy/writing your own form of a response and sending it via email (enquiries@meridiansolar.co.uk) or by post (by writing: FREEPOST DOWNING MERIDIAN – no stamp needed). If you require materials in an alternative format (e.g. large print or braille) please get in touch using the details above.

The Applicant will have regard to any comments received as part of the consultation and any of its appointed agents with respect to the further development of the Scheme and Application. Responses will form the basis of a consultation report that will be one of the factors taken into consideration by the Secretary of State when deciding whether the Application can be accepted for Examination. Therefore, in providing any comment, it should be borne in mind that the substance of your comment may be communicated to others as part of that consultation report.

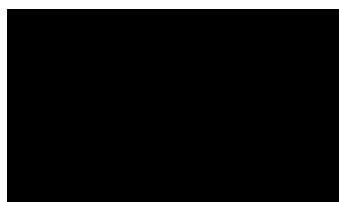
However, we will request that personal details are not placed on the public record. Personal details will be held securely in accordance with the relevant data protection legislation and will be used solely in connection with the consultation process and the development of the Scheme and, except as noted above, will not be disclosed to any third parties.

The Development Consent Order process

Information about the Act and DCOs can be found on the Planning Inspectorate's National Infrastructure Planning website: <https://infrastructure.planninginspectorate.gov.uk/>

If you have any questions about this letter, the Scheme or consultation, please do not hesitate to contact enquiries@meridiansolar.co.uk or 0800 652 6120.

Yours faithfully,



Head of NSIP Projects
Downing Renewable Developments

Enc. Copy of section 48 notice
Enc. Scheme Development Area Boundary Plan

MERIDIAN SOLAR FARM

The Planning Act 2008 - Section 48

The Infrastructure Planning (Applications: Prescribed Forms and Procedure) Regulations 2009 - Regulation 4

Notice Publicising a Proposed Application for a Development Consent Order

Meridian Solar Farm

Notice is hereby given that Meridian Solar Farm Limited of 10 Lower Thames Street, London, England, EC3R 6AF (the 'Applicant') intends to submit an application (the 'Proposed Application') to the Secretary of State for Energy Security and Net Zero (the 'SoS') for a Development Consent Order ('DCO') under Section 37 of the Planning Act 2008 (the '2008 Act').

The land required for the Proposed Application is located within the administrative boundaries of Lincolnshire County Council and South Holland District Council.

Summary of proposed works

The Proposed Application comprises the construction, operation (including maintenance) and decommissioning of photovoltaic (PV) solar panels and approximately 12 to 13 km of overhead line connection into National Grid's planned Weston Marsh substation (due to be located east of Spalding, with the exact location to be confirmed by National Grid) (the 'Scheme'). The Scheme will also include associated infrastructure, including co-located battery energy storage systems (BESS) and inter-array connections to link together the land parcels where solar panels are located. The Scheme would have capacity to generate approximately 750 megawatts (MW) of electricity for export to the National Electricity Transmission System (NETS).

The solar PV panels and associated BESS would be located within four land parcels (A, B, C and D), referred to collectively as the PV area. The inter-array areas are the indicative areas within which connection cables (the 'inter-array connection') would link the land parcels of the PV area. The configuration of the inter-array connection would be either overhead lines (up to 132kV), underground cabling (up to 132kV) or a combination of both. The grid connection corridor is the area between the PV area and the proposed National Grid Weston Marsh substation in which a 400kV overhead line (the 'grid connection') could be located.

The Scheme would be located within south-east Lincolnshire, north of Crowland and east of Spalding. The PV area and inter-array areas would be located within the boundaries of the five civil parishes of Crowland, Whaplode, Holbeach, Fleet and Cowbit parish. The grid connection corridor would be located within the boundaries of the two civil parishes of Weston and The Moultons.

The DCO will also seek the compulsory acquisition of land and/or rights in, on, under or over land required for the Scheme, as well as rights authorising the temporary occupation of land for the Scheme.

Other powers that the DCO may seek include the extinguishment and/or overriding of easements and other rights over or affecting land required for the Scheme; the application and/or disapplication of legislation relevant to the Scheme; the temporary stopping up or diversion of public footpaths during construction works; permanent and temporary alterations to the highway network for and in the vicinity of the Scheme, and such ancillary, incidental and consequential works, provisions, permits, consents, waivers or releases as are necessary and convenient for the successful construction, operation and maintenance of the Scheme.

The Scheme is an Environmental Impact Assessment Development ('EIA development') as defined by the Infrastructure Planning (Environmental Impact Assessment) Regulations 2017 (the 'EIA Regulations') and an Environmental Statement ('ES') will form part of the Proposed Application. The Applicant has notified the SoS in writing under Regulation 8(1)(b) of the EIA Regulations that it intends to provide an ES in respect of the Scheme. The ES will provide a detailed description of the Scheme and its likely significant environmental effects. Information compiled so far about the Scheme's likely environmental impacts is contained in a Preliminary Environmental Information Report ('PEIR') and summarised in a Non-Technical Summary, both of which form part of the consultation material.

Consultation

The Applicant is undertaking a statutory consultation on the proposals for Meridian Solar Farm between **Thursday 24 April and Sunday 8 June 2025** (the 'Consultation Period'). Responses must be received no later than 11:59pm on 8 June 2025 and responses received after that date may not be considered.

The consultation documents show the nature and location of the Project and will include plans, the PEIR and its Non-Technical Summary, among other documents ('the Consultation Documents').

How to view the Consultation Documents

The Consultation Documents are available to view or download free of charge from www.meridiansolarfarm.co.uk (the 'Scheme website') throughout the duration of the Consultation Period, from 24 April 2025 to 11:59pm on 8 June 2025.

Hard copies of the Consultation Documents, including the Statement of Community Consultation, the full PEIR and Non-Technical Summary of the PEIR, will be deposited at the locations listed below at the start of the Consultation Period.

Location and address	Opening hours	Materials available
Crowland Library , Hall Street, Crowland PE6 0EW	Tuesday and Thursday: 9.30am to 12.30pm and 2pm to 5pm Saturday: 10am to 1pm	Consultation Information Booklet Consultation Feedback Form Consultation Newsletter For reference only PEIR NTS SoCC
Spalding Library , Victoria Street, Spalding PE11 1EA	Monday, Tuesday, Wednesday and Friday: 9am to 5pm Thursday: 9am to 6pm Saturday: 9am to 1pm	Consultation Information Booklet Consultation Feedback Form Consultation Newsletter
Holbeach Library , Co-Op Store, 5 Fleet Street, Holbeach, Spalding PE12 7AX	Monday to Friday: 9am to 5pm Saturday: 9am to 12 noon	Consultation Information Booklet Consultation Feedback Form Consultation Newsletter
Tonic Health Centre Spalding , 6 Broadgate House, Westlode Street, Spalding PE11 2AF	Monday and Thursday: 10am to 7pm Tuesday, Wednesday and Friday: 10am to 3pm	Consultation Information Booklet Consultation Feedback Form Consultation Newsletter
Tonic Health Centre Holbeach , Holbeach Hub, Boston Road	Monday and Thursday: 10am to 7pm Tuesday, Wednesday and Friday: 10am to 3pm	Consultation Information Booklet Consultation Feedback Form Consultation Newsletter

South, Holbeach PE12 7LR		
--------------------------	--	--

Venue opening times are correct at the time of publication. The Applicant recommends contacting the venue to check the opening times before visiting, especially over bank holidays.

The Applicant is hosting three in person public consultation events, where the Consultation Documents will be available to view:

Venue	Date	Time
Sutton St Edmund Village Hall , 273 Broadgate, Spalding PE12 0LR	Saturday 10 May 2025	10:30 – 16:30
Crowland Snowden Pavilion , Thorney Road, Peterborough PE8 9QR	Wednesday 21 May 2025	14:00 – 20:00
Weston Village Hall , Small Drove, Spalding PE12 6HU	Thursday 22 May 2025	14:00 – 20:00

Details are correct at the time of publication and are unlikely to change. Any updates will be reflected on the Scheme website, which the Applicant recommends to check for the most current details before attending.

The Applicant will also upload two online information presentations to the Scheme website during the consultation period. The first presentation will provide an overview of our proposals and where to find out more information. The second presentation will be uploaded after the in person events and will provide a summary of the main questions we were asked and a response to them.

All Consultation Documents, including the SoCC, will be in hard copy at no extra charge (except the PEIR and NTS, hard copies of which can be requested for a charge of £0.35 per page to cover printing and posting costs). Upon request, all documents can be made available in alternative formats, such as large print, braille, audio and alternative languages.

Responding to this consultation

Comments and representations in response to this consultation may be submitted in the following ways:

Feedback Form: Complete or download the Feedback Form at the Scheme website www.meridiansolarfarm.co.uk; or it can be completed and left at the consultation event; or by request from the project team either at an event or via phone or email.

By email or post: Completed Feedback Forms, and any other comments, can be emailed to enquiries@meridiansolar.co.uk or returned by post (no stamp required) to FREEPOST DOWNING MERIDIAN.

Responses must be received by the Applicant by no later than 11:59pm on Sunday 8 June 2025. The Applicant will have regard to all responses when developing the proposals for the Scheme once the consultation has closed. Responses will be reported in a Consultation Report which will form part of the Proposed Application. This will be taken into consideration by the Planning Inspectorate when deciding whether the Application can be accepted for examination. Therefore, in providing any comment, it should be noted that the substance of it may be communicated to others as part of the Consultation Report.

Personal data supplied to the Applicant in response to this consultation will be treated confidentially and processed and handled in accordance with the Data Protection Act 2018 and the UK GDPR. The information may be disclosed to or shared with the Applicant's connected companies, agents, contractors and advisors who provide services to the Applicant in connection with the preparation of an application for development consent under the 2008 Act. This will allow the Applicant to fully consider the responses and use them in the preparation of application materials. Upon submission of the

Proposed Application, the SoS may require the Applicant to supply copies of all consultation responses received. If a request is made, the Applicant is under a legal obligation to supply such copies. By submitting a consultation response to the Applicant, you understand that we may supply a copy of your response to the SoS via the Planning Inspectorate if required.

How to contact us

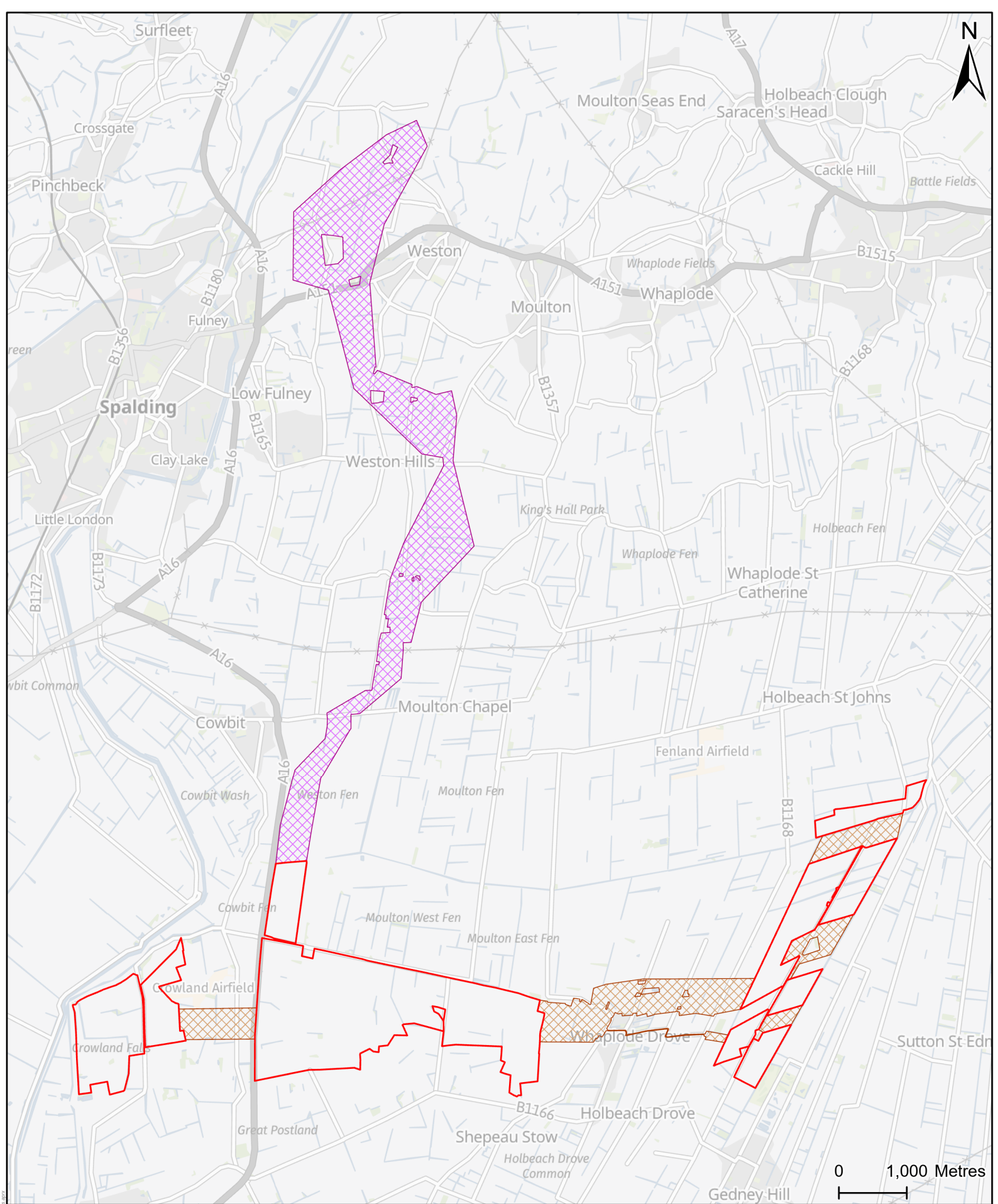
If you have any questions about this notice, the consultation, or the Scheme, please contact the Applicant by using one of the contact methods provided below:

Email: enquiries@meridiansolar.co.uk

Telephone: 0800 652 6120

Postal address: FREEPOST DOWNING MERIDIAN (no stamp needed)

April 2025



Project Title	Meridian Solar Farm
Client	Meridian Solar Farm Ltd.
Map Title	PEIR Volume II Figure 1-1: The Scheme

Legend
PV Area
Inter-Array Areas
Grid Connection Corridor

Copyright
Contains OS data © Crown Copyright and
database right 2025
Contains data from OS Zoomstack

